

## Useful websites

These websites are pupil friendly, containing fun, interactive games to develop Maths and Literacy skills.



Oxford Owl (Phonics)

Education City

BBC Schools

Phonics Play

Active Learn



In Reception we love to celebrate children's achievements at home as well as at school.

We would love to hear about any accomplishments/awards/independence your child has achieved. You can write these down on a proud cloud and as a class we can share and celebrate your child.

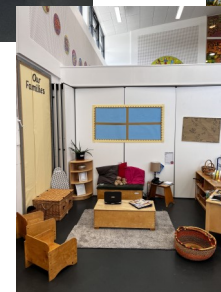
Examples may be:

- An extra curricular club that your child attends
- Fastening their coat or getting dressed by themselves.



If you have any messages or concerns please speak to your child's teacher on the door.

# St Jude's CE Primary Academy Reception Autumn Term 2023



## Miss Allsopp, Miss Preene and Mrs Banks welcome you to your Reception year!

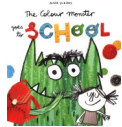
This term we will be helping the children to settle into Reception. We are getting to know each other as well as getting to know our fantastic environment.

As well as our classrooms, we have a discovery area where children can become creative. We have a role play area, a construction area, a creation station, a curiosity corner and many other opportunities for you child to explore.

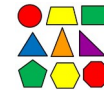
In **Phonics** we follow the Read, Write, Inc scheme to help give our children a flying start in learning to read and write. Children will help our friend Fred the Frog to recognise and write sounds and words.



In **Literacy** this term we will be reading and learning from variety of stories, such as 'The Colour Monster', 'Super Duper Me', 'Percy the Park Keeper' and 'Stuck!'.



In **Maths** we will be counting and matching numerals to amounts. We will be finding out about shapes and patterns all around us.



We will be using the measurement of length of different objects.



For our **Understanding the World** focus, we will be sharing information about ourselves and our families. Then we will start to explore Autumnal changes and the effects this has on animals.

For our **Expressive Art and Design** we will be using a variety of media and materials to create art work such as collages, sketches, printing and computer designs. We will also be expressing ourselves through music.



In **Physical Development** we will be exploring ways to travel and become special aware. As well as a designated PE lesson children will have the opportunity to develop their gross and fine motor skills in activities throughout the day.

As well as our own outdoor area and garden, we will have the chance to explore our forest school! Due to our English weather, children will need wellies available in school throughout the week.

In **PSED** we will be making our Reception class rules and deciding together what makes a happy school and we will be discussing and sharing our feelings.

In **Worship** we will be listening to Bible stories and saying our daily Reception prayers.



## Notice Board

Please can you continue to support your child by taking opportunities at home to develop independence. Encourage your child to dress themselves, put their own shoes on, recognise and write their name and recognise letters and numbers in the environment.

Please continue to practise your child's new sound with them and read their reading book. Please ensure children have their reading diary and book in school every day.



PE will be on a **Monday** and **Friday** and the children will need to wear their PE kits on these days.

Please ensure your child has a warm, waterproof coat every day in school as we take our learning outside whatever the weather.

Many Thanks  
The Reception Team

