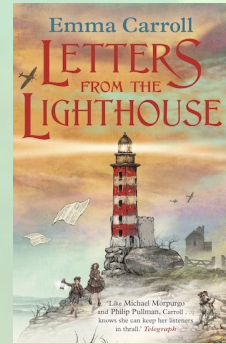
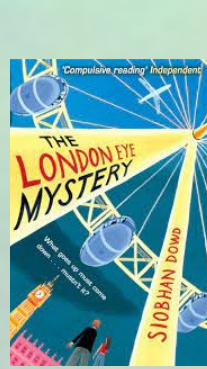


# Our journey through Autumn Term looks very exciting in Year 6!

September  
2025



## English

During Literacy, the children will focus on two main texts across the term. These will be 'The London Eye Mystery' and 'Letters from the Lighthouse.' Children will write a range of text types, both fiction and non-fiction. As well as focusing on a range of SPAG outcomes.

## Mathematics

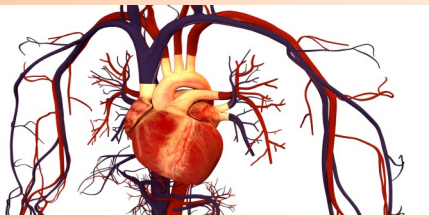
In Numeracy, pupils will cover a range of mathematical topics, with the aim of consolidating their understanding of place value and the written methods, before moving onto fractions, decimals and percentages. Pupils will have the chance to solve multi-step problems whilst also aiming to reason and explain their findings.



## Science

During Science this term, we will learn about animal and plant classification, where children will have the opportunity to study a key individual—Carl Linnaeus. Pupils will then move onto studying the human body and will look at healthy lifestyles.

They will be given the opportunity to complete scientific enquiries throughout the term.



## RE

In the Autumn Term, pupils will be researching and discussing how God can be both holy and loving. They will then move onto answering the big question—'Was Jesus the Messiah?', analysing a range of religious texts and Christian/Jewish beliefs and celebrations.



## Wellbeing

In Wellbeing this term, the children will look at the five ways to wellbeing. We will then look at the differences in our community and how we can celebrate these.



## Art & DT

In the Autumn Term, we will be focusing on drawing. This will include revising and progressing with our drawing skills and completing a short study on the artist, LS Lowry as well as looking at the artist Elizabeth Catlett during our Black History focus.

Our DT focus will be to design, make and evaluate our own felt phone cases. As part of this topic we will complete market research, before producing a marketing poster.



## Geography & History

As part of our Geography Topic, we will complete an in-depth study on London; including our trip to the Natural History Museum. We will look at London's geographical location, why it is our capital city and we will be comparing it to other capital cities around the world.



During our World War II topic, pupils will have the opportunity to learn about the impact of the war and rationing, with a particular focus on the impact on the home front and the people of Wolverhampton. Throughout the topic, pupils will look at the causes of the war, the major events of the war and they will build an understanding of how VE Day was celebrated. Pupils will also look at WWII propaganda and the impact that this had.



## Computing

This term, pupils will be looking at how we can stay safe online and we will be identifying the impact of our digital footprint. We will then complete a module of work around coding, which will build on the children's skills to create code.



R  
Respect

A  
Achieve

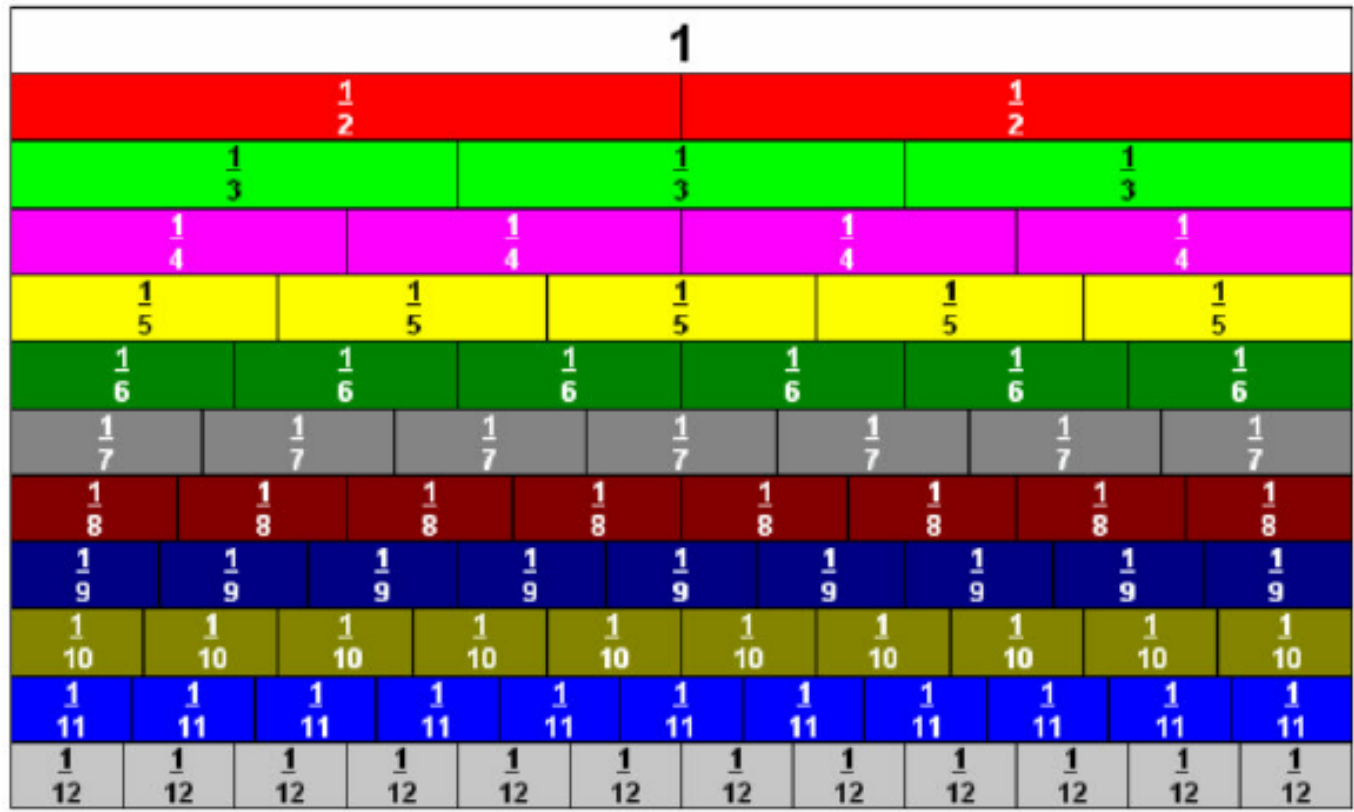
I  
Inspire

N  
Nurture

B  
Belief

O  
Outstanding



W  
Welcoming



PE

Children will have swimming every Wednesday- they will need to bring their swimming kit. PE will be on a Friday!

Please ensure that they come to school in the correct kit.



Homework

Homework will be given out on a Friday and should be returned to school by Tuesday. This will be sent in homework books or will be set online.

Some useful websites to use for independent learning include:

- Seesaw
- BBC Bitesize
- Spelling Frame
- Timetable Rock Stars
- Google Classroom

If your child cannot access the websites above, please speak to your child's class teacher for their logins.

Spellings


Pupils will complete a spelling test each week. We will send out a termly spelling overview. Children will practise their spellings daily in school.

Fractions	Decimals	Diagram	Out of 100	Percentages
1/10	0.1	<div><div></div><div></div><div></div><div></div><div></div></div>	10/100	10%
2/10	0.2	<div><div></div><div></div><div></div><div></div><div></div></div>	20/100	20%
3/10	0.3	<div><div></div><div></div><div></div><div></div><div></div></div>	30/100	30%
4/10	0.4	<div><div></div><div></div><div></div><div></div><div></div></div>	40/100	40%
5/10	0.5	<div><div></div><div></div><div></div><div></div><div></div></div>	50/100	50%

### New Curriculum Spelling List Years 5 and 6

accommodate	communicate	equip	immediately	physical	sincerely
accompany	community	equipped	individual	prejudice	soldier
according	competition	equipment	interfere	privilege	stomach
achieve	conscience	especially	interrupt	profession	sufficient
aggressive	conscious	exaggerate	language	programme	suggest
amateur	controversy	excellent	leisure	pronunciation	symbol
ancient	convenience	existence	lightning	queue	system
apparent	correspond	explanation	marvellous	recognise	temperature
appreciate	criticise	familiar	mischievous	recommend	thorough
attached	curiosity	foreign	muscle	relevant	twelfth
available	definite	forty	necessary	restaurant	variety
average	desperate	frequently	neighbour	rhyme	vegetable
awkward	determined	government	nuisance	rhythm	vehicle
bargain	develop	guarantee	occupy	sacrifice	yacht
bruise	dictionary	harass	occur	secretary	
category	disastrous	hindrance	opportunity	shoulder	
cemetery	embarrass	identity	parliament	signature	
committee	environment	immediate	persuade	sincere	





Please try and read as much as possible! Whether it be your school reading book or one of your favourite books from home.

We have plenty of book reviews for you to fill out in school so that you can share your favourite books with your peers!